

D3.221 Real-world study: Safety and effectiveness of a subcutaneous glutaraldehyde, polymerized undiluted *O.europaea-wild grasses allergen extract*

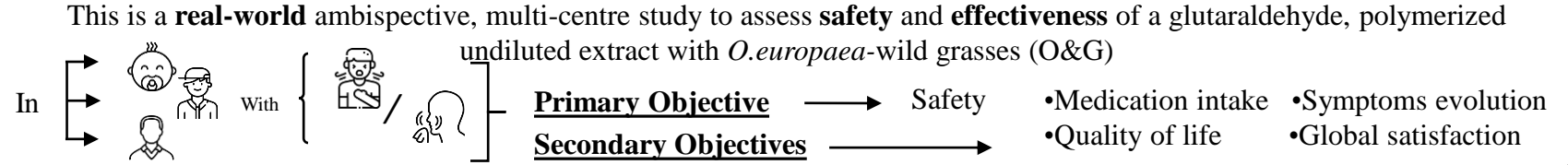


López González P.¹, Padial Vilchez MA.², Palomeque Rodríguez MT.³, Davila Fernández MG.⁴, Bellido Linares V.⁵, Funes Vera E.⁶, Montoro Ferrer A.⁷, Cordobés Durán C.⁸, Cuevas Bravo C.⁹, López Ruiz C.⁵, Moreno Marta E.¹⁰, Sánchez Moreno GV.⁴, Villalobos Violán V.¹¹, Rodríguez García V.¹², Verdeguer Segarra O.¹³, Ávila Castellano MDR.¹⁴, Gómez Nieves E.¹⁵, González Moreno A.¹⁶, Laguna JJ.¹⁷, Somoza Álvarez ML.^{11,18}, Gómez Cardeñosa A.¹⁹
 1.Hospital Universitario Infanta Leonor, Madrid Spain; 2.Hospital Infanta Sofía, San Sebastián de los Reyes, Spain; 3. Hospital Universitario del Perpetuo Socorro de Albacete, Albacete, Spain; 4.Hospital Henares, Coslada, Spain; 5. Hospital El Tomillar, Alcalá de Guadaíra, Spain; 6.Hospital Rafael Méndez, Lorca, Spain; 7.Hospital General de Villarrobledo, Villarrobledo, Spain; 8.Hospital de Mérida, Mérida, Spain; 9.Hospital Quirónsalud Toledo, Toledo, Spain; 10.Hospital General La Mancha Centro, Alcázar de San Juan, Spain; 11.HM Puerta del Sur, Madrid, Spain; 12. Hospital Beata María Ana, Madrid, Spain; 13.Hospital Gandía, Valencia, Spain; 14. Hospital Universitario Virgen del Rocío, Sevilla, Spain; 15.Hospital Don Benito-Villanueva, Don Benito, Spain; 16 Hospital Universitario Fundación Alcorcón, Alcorcón, Spain; 17. Hospital Central de la Cruz Roja San Jose y Santa Adela, Madrid, Spain; 18. HM Montepríncipe, Madrid, Spain; 19.Diater Laboratorio de Diagnóstico y Aplicaciones, S.A., Leganés, Spain.

BACKGROUND

- Grasses and olive pollen are the most frequent cause of allergic sensitization in Spain, a real issue that causes an impact in healthcare economy.
- Immunotherapy is the only current treatment capable of modifying the natural cause of the disease.

METHOD



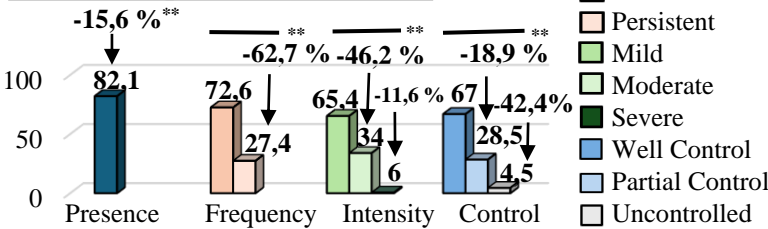
RESULTS

SCIT (O&G) N=218 **Mean treatment 10 months**

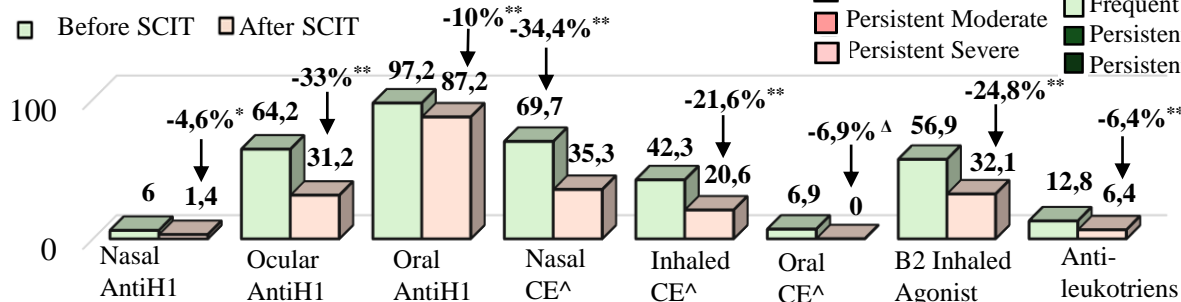
88,5% Cluster build-up schedule

Vial B = 0,2 ml + 0,3 ml = 0,5ml (30 minute interval)

Rhinitis symptoms after SCIT (%)



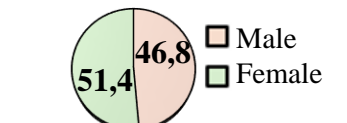
Medicine intake Before/After SCIT (%)



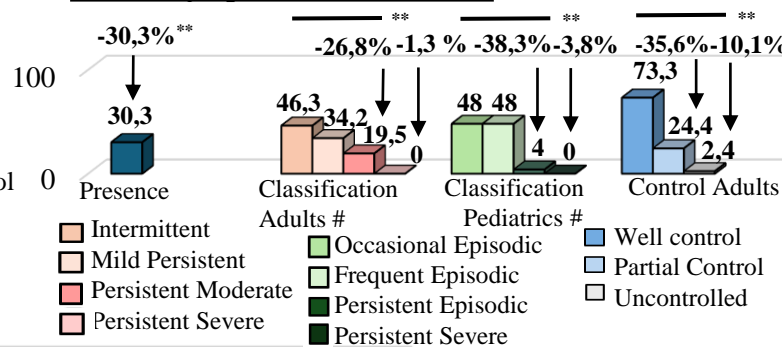
Age subset distribution (N)



Gender distribution (%)



Asthma symptoms after SCIT (%)

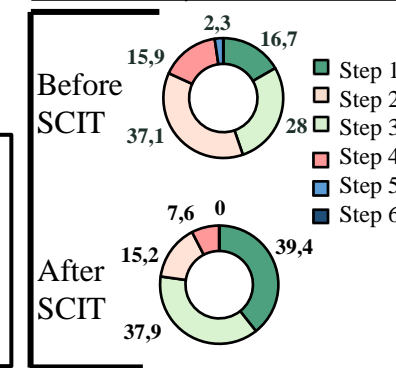


Description of the local reactions (0.0033 LRS/100 injections)

- There were 18 adverse reactions (**0.0033 AEs/100 injections**)
- No local reactions were reported in the adolescent group
- No systemic reactions were reported**

Type	Intensity	Onset	Phase
Local	Mild	Late	Up-dosing
Local	Mild	Late	Up-dosing
Local	Mild	Late	Up-dosing
Local	Mild	Immediate	Up-dosing
Local	Mild	Immediate	Up-dosing
Local	Mild	Immediate	Up-dosing
Local	Mild	Immediate	Up-dosing
Local	Mild	Immediate	Maintenance
Local	Mild	Immediate	Maintenance
Local	Mild	Immediate	Maintenance
Local	Mild	Late	Maintenance
Local	Moderate	Late	Up-dosing
Local	Moderate	Late	Up-dosing
Local	Moderate	Late	Up-dosing
Local	Moderate	Late	Up-dosing
Local	Moderate	Late	Maintenance
Local	Moderate	Immediate	Up-dosing
Local	Moderate	Immediate	Up-dosing
Local	Moderate	Immediate	Up-dosing

Asthma steps of treatment **



*p<0,05
 **p<0,001
 Δ No patient took oral CE after SCIT
 ^CE= Corticosteroids
 #GEMA 5.0

CONCLUSIONS

Subcutaneous immunotherapy with a glutaraldehyde, polymerized undiluted *O.europaea-wild grasses allergen extract* has proven a **high safety profile**, as well as **effectiveness** in both **children and adults**. Therefore, it should be considered for treating sensitized patients to olive and grasses pollen who develop allergic rhinitis/rhinoconjunctivitis +/- asthma.